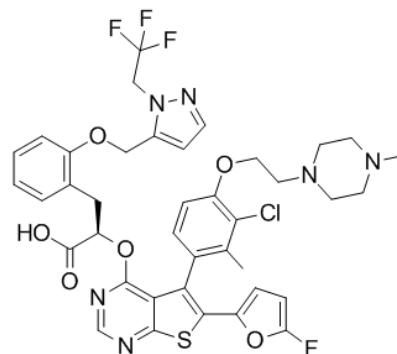


Product Name : S63845
Cat. No. : PC-42244
CAS No. : 1799633-27-4
Molecular Formula : C₃₉H₃₇ClF₄N₆O₆S
Molecular Weight : 829.2593
Target : Bcl-2
Solubility : DMSO



Biological Activity

S63845 is a highly potent, selective **Mcl-1** inhibitor with K_d of 0.19 nM, with no appreciable binding affinity to BCL-2 or BCL-XL (K_i > 10 μM).

S63845 binds to the BH3-binding groove of Mcl-1.

S63845 potently kills MCL1-dependent cancer cells, including multiple myeloma (IC₅₀ < 0.1 μM), leukaemia and lymphoma cells, by activating the BAX/BAK-dependent mitochondrial apoptotic pathway.

S63845 is well tolerated and shows high effectiveness against mouse cancer models.

References

Kotschy A, et al. **Nature**. 2016 Oct 27;538(7626):477-482.

Merino D, et al. **Sci Transl Med**. 2017 Aug 2;9(401). pii: eaam7049.

Letai A. **Cancer Cell**. 2016 Dec 12;30(6):834-835.

Caution: Product has not been fully validated for medical applications. Lab Use Only!

E-mail: tech@probechem.com